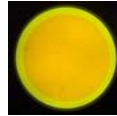
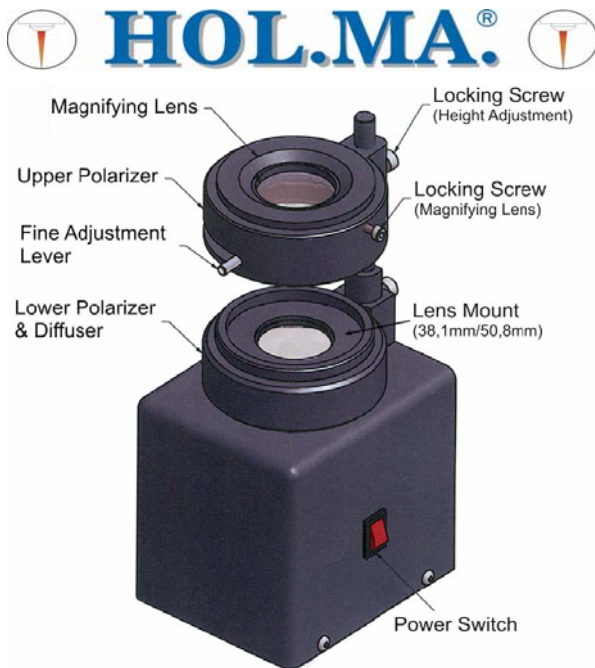


"Delivering the worlds finest products to the sheet metal working industry"

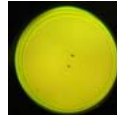
Mate Tooling Solutions

Presents

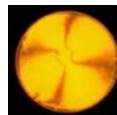
Professional Lens Inspection & Cleaning Equipment



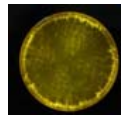
It is quick and easy to see that this lens is dirty.



Two small pieces of back spatter in the centre of the lens are not so easily visible.



This lens was overheated (stressed). This cannot be seen with the naked eye. This problem mainly occurs when using lasers with a high power output of 4, 5, 6 or 7KW.



The bright spots at the edge of the lens show that the lens was mounted too tightly in the holder. The reason is, that the holder is dirty or was screwed too tight. Because the lens consists of a soft material, it is strained, so now you have problems finding the focusing point, and it is stressed very easily. You can see the stress in the middle of the lens (shadow - cross). All this is invisible to the naked eye.

Does this sound familiar?

The Laser operator comes to you and says:

"I need a new lens, the old one's not working anymore!"

You reply, "Did you clean the lens, or is there back spatter on it?"

Of course, the reply will be that the lens was properly cleaned, but still it does not work! Where do you go from there?

9 times out of 10 a new lens will be handed over and you state that you will check how many hours this lens will do, without solving the real reason for the lenses not achieving their full life.

Now with our Dirt & Strain Viewer you have the instrument that tells you quickly & efficiently, exactly what the problem is.

Place the lens in the lens mount and position your magnifying lens by using the height adjustment so that the lens is clearly visible.

Now you can see if the lens is dirty.

Is there back spatter on the lens? Where exactly is it?

Is it near the edge, or in the centre of the lens.

With the fine adjustment lever you can add the polarizer.

Now you can check if the lens has been overheated (stress).

It is not possible to see this with the naked eye!

We know companies that have 20 or more used lenses in their drawers and do not know whether they are really damaged or not.

Now you are able to check the lenses easily and quickly without causing long periods of down time!

HOL.MA.® Dirt & Strain Viewer Kit, including Cleaning Apparatus Comes complete in its own protective case (Part No. HG15.130)

1 Dirt & strain viewer (HG 15.100)

1 Mount for 38,1mm lenses (HG 15.101)

1 Mount for 50,8mm lenses (HG 15.103)

1 Box latex examination gloves with 100 pieces (HG 15.136)

1 Dust blower (HG 15.131)

1 Pipette bottle 100ml to apply acetone (HG15.135)

2 Lens cleaning and polishing cloth 45 x 45cm, in 100% cotton (HG 15.132)

1 Kodak lens cleaning paper, 50 sheets (HG 10.173)

1 Ultrasonic appliance including plastic basket and cleansing liquid (HG15.133)

Because you would not see the cause without the dirt & strain viewer, every new lens would have also been damaged when installed.

**FREEPHONE
0800 413 408
FREEFAX
0800 413 409**



A wide range of optics and mirrors are also available from Ophir.

They include

"Duralens" & the world renowned "Black Magic" lenses. These are suitable for almost all Laser cutting machines in the U.K.

Ready mounted lenses for Amada Lasers are also available.

Mate Tooling Solutions Ltd

Phone: 0800 413408

Fax: 0800 413409

E-mail: info@matetoolingsolutions.co.uk

Internet: www.matetoolingsolutions.co.uk